

This project is part of the [So Sew Simple project series](#) for beginners written by [Helen Rhiannon](#) and sponsored by [Hantex](#).

3D Christmas Tree Decorations

What better way to decorate your Christmas table, than with one of these easy to make, six sided, padded Christmas trees! There are some fantastic Christmas cotton prints around so plenty of reasons to get in the festive mood.



What you need: -

Fabric - 2-3 Fat Quarters. I used four different fabrics.

Hantex
Knit Sew Craft

I used Christmas fabrics kindly provided by [Hantex](#).

Fabric Scissors

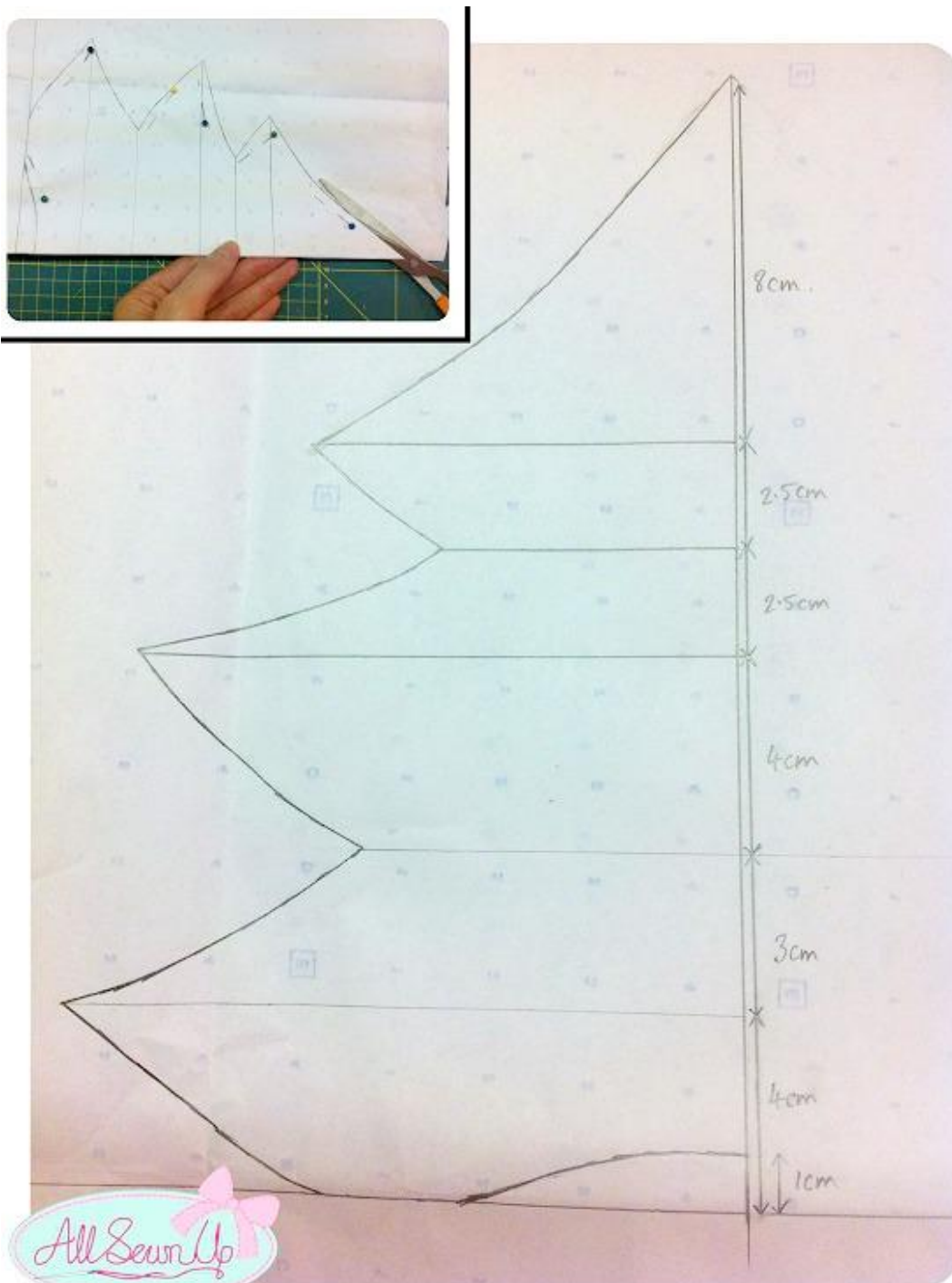
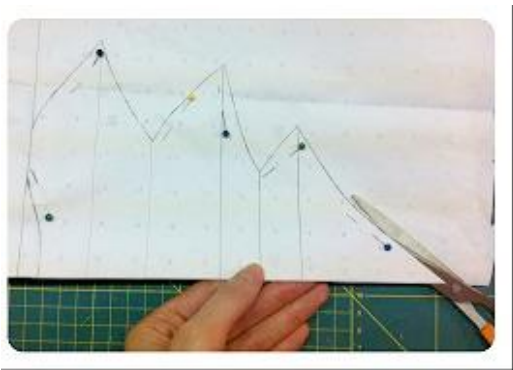
Pins

Matching thread

Sewing Machine - Straight stitch length 2.5

Hollowfibre stuffing

[Tree template](#)



Stage 1 - Making your pattern.

I drew my Christmas tree by hand. I have taken a picture of my pattern with measurements if you need some help with the size. The height is approximately 23cm when finished and 28cm in width. Only draw half of the tree, then fold the paper in half, pin together and cut around the line. You can download the pattern I drew [here](#).





Stage 2 - Cutting out your Christmas tree.

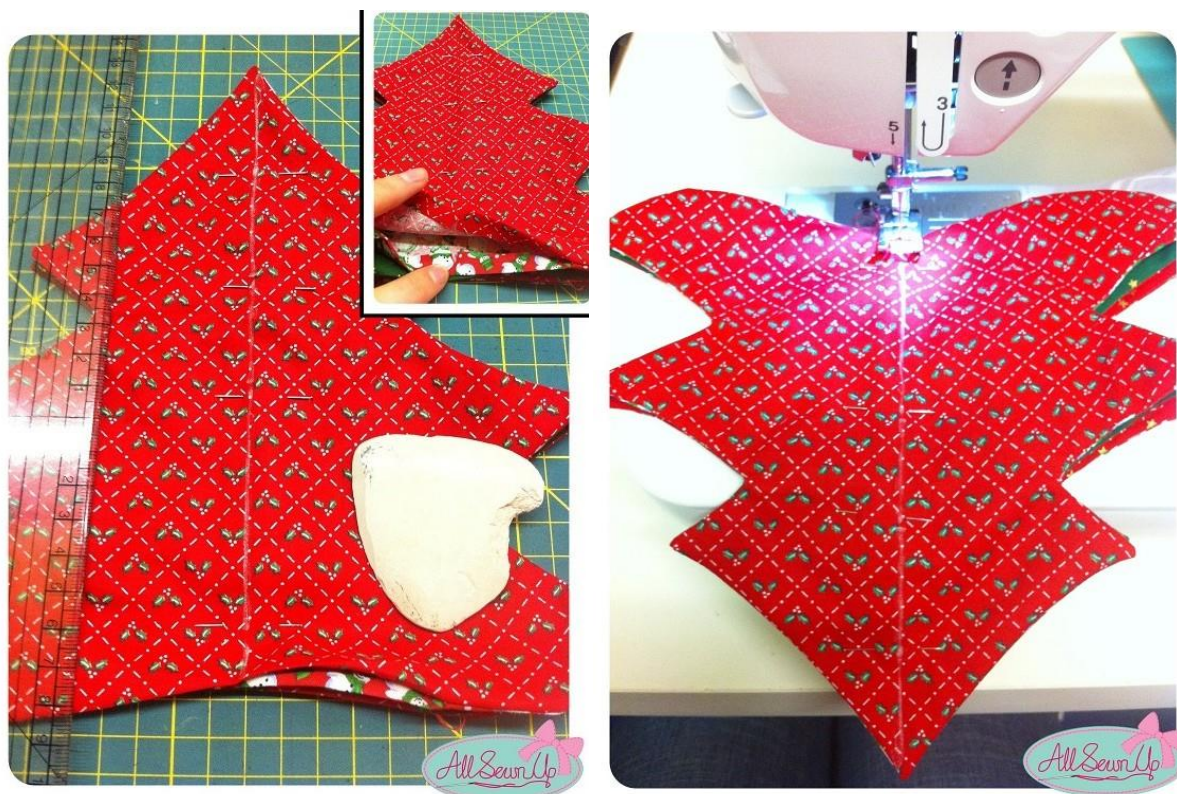
Cut out 6 Christmas trees in a selection of fabrics. With the right sides together, pin your three sections together marking a gap of 10cm on the base to allow for stuffing.



Stage 3 - Sewing your Christmas tree shapes.

Sew around the outside with a 1cm seam allowance. Make sure to pivot at the points to create a neat finish. (Tip - Use tailors chalk to mark stitching line at points.)

Cut away excess fabric from points and make sure to cut into the inverted 'V' within 2mm of the stitching. This allows the tree to turn inside out and sit neatly.



Stage 4 - Sewing your tree together.

Turn each tree the right way round and carefully poke the points through with small scissors. Iron the trees so that they are all flat and neat. Also turn under the seam allowances of the gap in the base and iron in place.

Lay each tree on top of each other matching the tip of the tree and centre of the base. Pin in place. Using tailors chalk, draw a line up the centre of the tree. Stitch on this line, sewing all three layers together.



Stage 5 - Filling your tree with stuffing!

You should now have 6 sides to your tree with a small gap at the base of each. Stuff each side of the tree and use the end of a long paintbrush or knitting needle to push the stuffing into the points. Stitch your gaps up at the base and turn upright!

Well done on making your first Christmas tree! Why not add beads or even a star to decorate your tree?

Please let me know how you get on making your tree and if you have any questions, then please just get in touch!

Do share pictures on my [facebook fanpage](#) as I love to see what everyone makes.

Merry Christmas from Helen @ [AllSewnUp](#)

